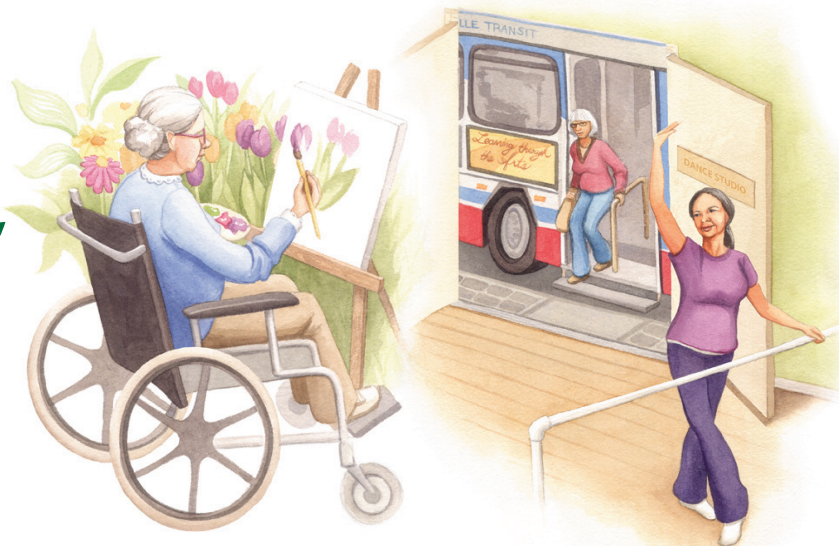


The Sheridan Elder Research Centre
INVITES YOU to

'Acceptance and Adaptation'

– Understanding Alzheimer Disease
and Related Dementia (ADRD)



Please join us for an interactive presentation by Kim Fitzpatrick, Supportive Care Coordinator at The Village of Humber Heights in Etobicoke. Kim is a graduate of the Social Service Worker- Gerontology program at Sheridan College. She has been working in the field for nine years and is knowledgeable and passionate about Alzheimer's and Dementia care.

Kim's talk will address:

- What Alzheimer's Disease is, including the progression of the disease
- How family members and loved ones can manage the life changes it brings
- Validation therapy
- The innovative life skill stations model used at The Village of Humber Heights
- Strategies for having meaningful interactions and successful communication during activities of daily living and while providing personal care

Date: Wednesday, March 28, 2012

Time: 7:00 P.M. – 8:30 P.M.

Location: Sheridan College
1430 Trafalgar Road
Oakville, Ontario
Room J102 | Sheldon Levy Centre

Cost: Complimentary. Donations are welcome and will be used to support research and educational outreach events at SERC.

We hope you can join us!

Please RSVP to Paulina Camino by March 26, 2012

Tel: 905-845-9430, extension 8617

Email: paulina.camino@sheridanc.on.ca

<http://serc.sheridaninstitute.ca>
social media: follow and like us @SERClab

Illustration & Design: www.aliciasinfinity.com
Sheridan Illustration Grad


SCHLEGEL VILLAGES

 *Shine Brighter*
Sheridan

